



A Family Resort at Starved Rock.

Lodge Room Accommodations

Check-In:

4:00 pm

Check-Out:

11:00 am

Cancellation Policy:

72 hours prior to arrival, one nights stay + tax

Family Suite

Available with or without a balcony
Accommodates up to six people (room rate is based on four)
Two queen-size beds
Queen-size sofa sleeper

King Suite

Available with accessible restroom
Accommodates up to four people
One king-size bed
Queen-size sofa sleeper

Kid Cabin Suite

Accommodates up to five people (room rate is based on four)
One queen-size bed
Twin-size sofa sleeper
One set of twin-size bunk beds

Whirlpool Suite

Accommodates two people
One king-size canopy bed
Two-person whirlpool tub
Cozy fireplace

Deluxe Family Suite

Accommodates up to eight people (room rate is based on six)
Two queen-size beds
Living area with queen-size sofa sleeper, cozy fireplace and wet bar
Private bedroom with a king-size bed and two-person whirlpool tub
Each room includes a television (total of 3)

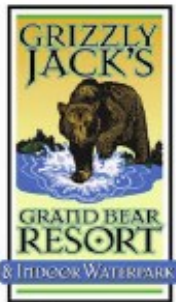
*All rooms include a television, microwave, refrigerator, iron & ironing board and hair dryer.
Wireless internet is available throughout the lodge.*

Grizzly Jack's Grand Bear Resort

2643 N. IL Rt. 178, Utica, IL 61373

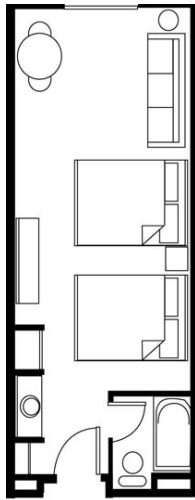
1-866-399-FUNN (3866)

www.grizzlyjacksresort.com

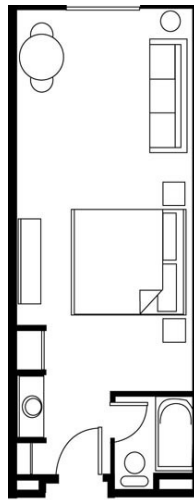


A Family Resort at Starved Rock.

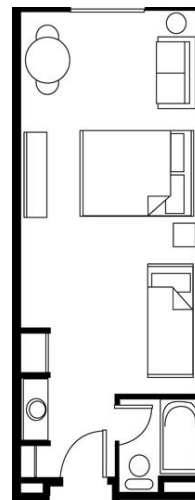
Lodge Room Accommodations



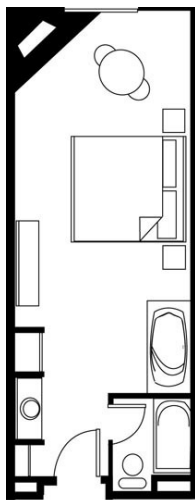
Family Suite



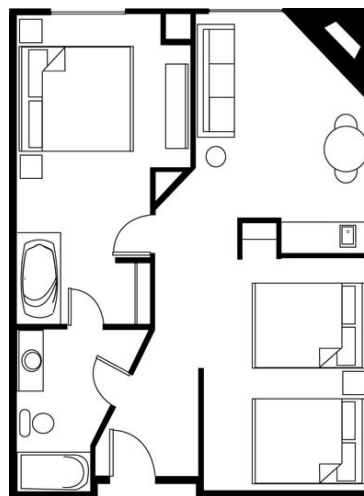
King Suite



Bunk Bed Suite



Whirlpool Suite



Deluxe Family Suite

Grizzly Jack's Grand Bear Resort
2643 N. IL Rt. 178, Utica, IL 61373
1-866-399-FUNN (3866)
www.grizzlyjacksresort.com